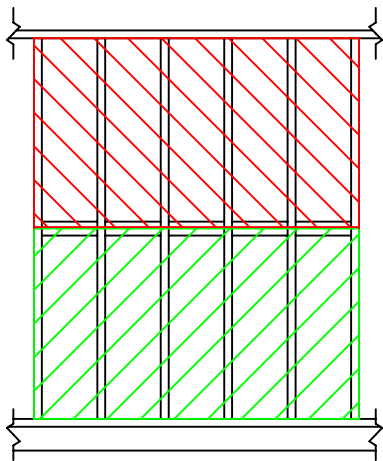
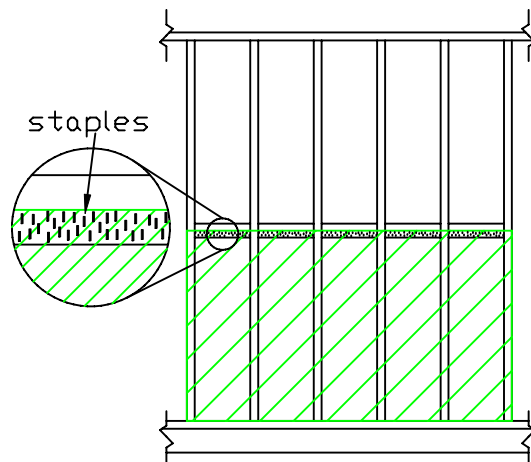


Install flat 2by blocks in stud bays so that the blocks are centered at the plywood edge joint.

Place the bottom sheet of plywood so it rests on the mudsill. It should extend 1/2 way into the blocks. Staple plywood onto blocks with 1 1/2" 15ga staples 1-2" o.c.



Place the top sheet of plywood on the bottom sheet. Staple it to the blocks. Pop a chalk line if you need to to make sure you hit the blocks.

## Horizontal stapled splice