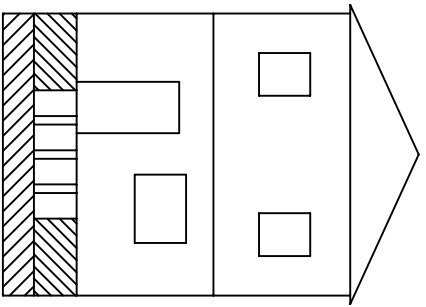
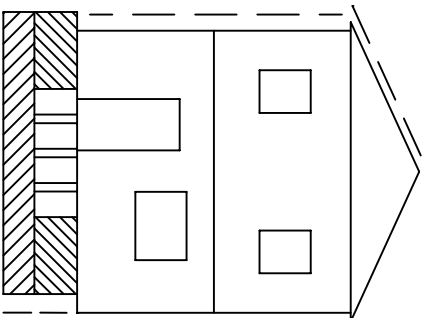


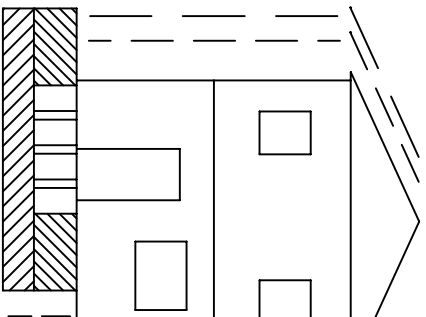
**CRIPPLEWALL BRACED
WITH PLYWOOD AND
FOUNDATION BOLTED**



**EARTHQUAKE MOVES
BRACED CRIPPLEWALL
& BOLTED FOUNDATION**



**FLOOR OF HOUSE
SLIDES ON TOP
OF CRIPPLEWALL**



**HOUSE FALLS OFF
BRACED CRIPPLEWALL
& BOLTED FOUNDATION**

